



# How to use Robocoach

Sport AI Lab



# Sign In Screen

Enter the Username and Password to login.  
(Student Account Only)

RoboCoach

Username

Password

Remember Me

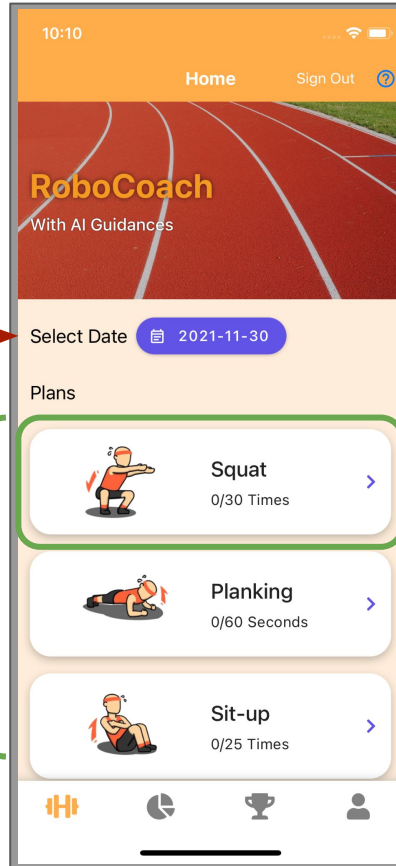
SIGN IN

SIGN IN WITH GUEST MODE

Use guest mode to try the app.  
(Data will not be stored in Cloud )



# Main Screen



Click button to begin the walkthrough

Change the selected date to check the exercise plans.

Click the sport card to enter the Preview Screen.

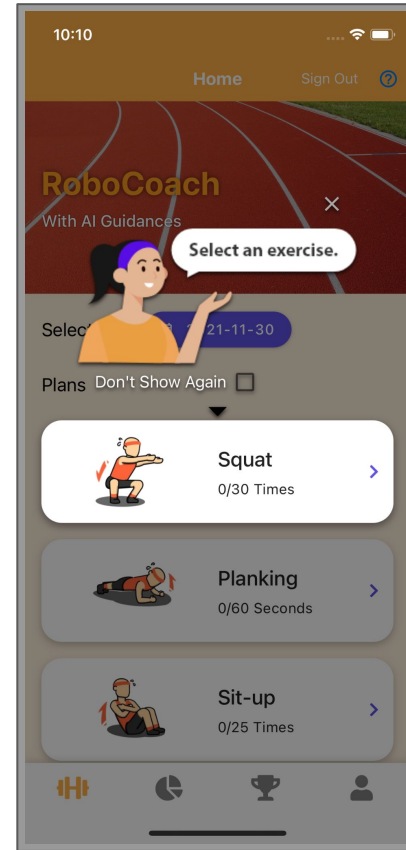
Teacher can assign sport plans on the website

Plans will be added into students' Main Screen



# Main Screen (Walkthrough)

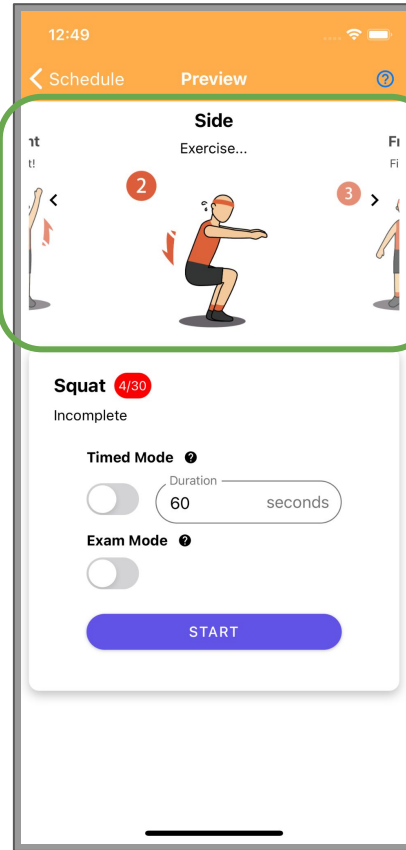
- A walkthrough will begin and lead students to use the app when the app is first launched.
- Student can close the walkthrough after learning how to use the app.
- The walkthrough can be shown again by click the walkthrough button.



# Preview Screen

Guide for the Sport AI Screen

Information about the Sport



Mode Switch

- Default
- Timed
- Exam

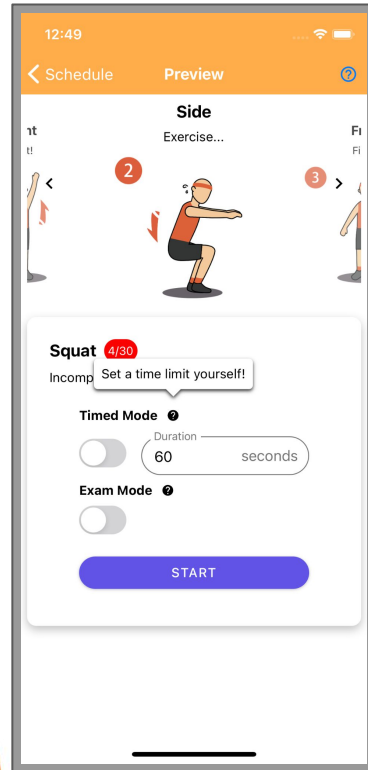
Click the button to enter the Default Sport AI Mode.

Use the switches to enable Timed/Exam Mode.

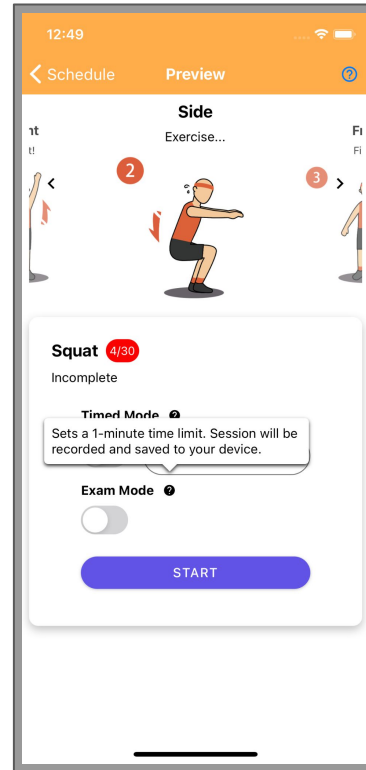
# Preview Screen

The duration is limited in the Timed Mode and Exam Mode.

## Timed Mode



## Exam Mode



Time's Up



Export Screen  
Recording Video



Save Video to  
Gallery



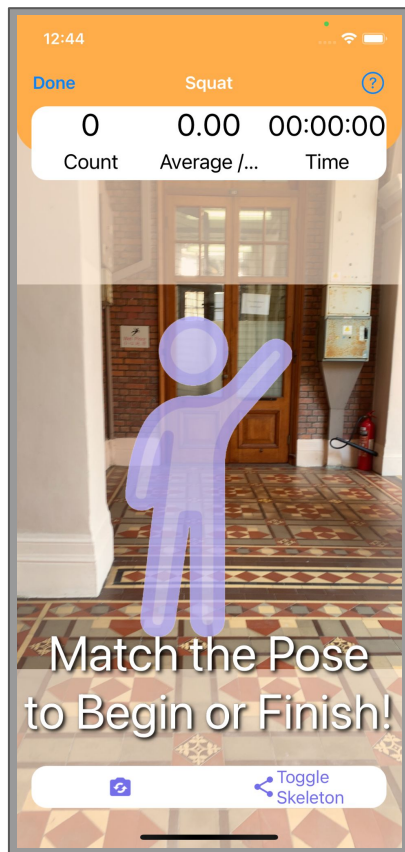
# Sport Section Screen

Click button to finish the session



Please Note :

- Keep the device stable during sport session.
- Some permissions are required to use the app.
- Test the performance for front and back cameras before start the session.
- Keep exercising within the Sport AI Identify Zone.
- Try to keep the App open at Sport Session Screen while exercising.



Exercise Record Window



Sport AI Identify Zone

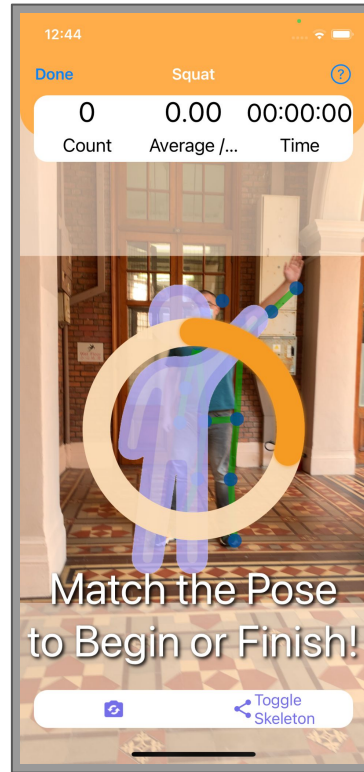


Camera Switch Button  
&  
Skeleton Display Button



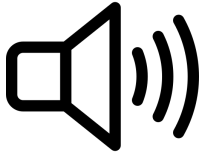
# Sport Section Screen (Countdown)

- Student can raise their hand to start counting
- Sport AI will start a countdown after passing the start pose recognition.
- Student can get ready during the countdown
- Sport AI will end the exercise session when the student raise their hand again.

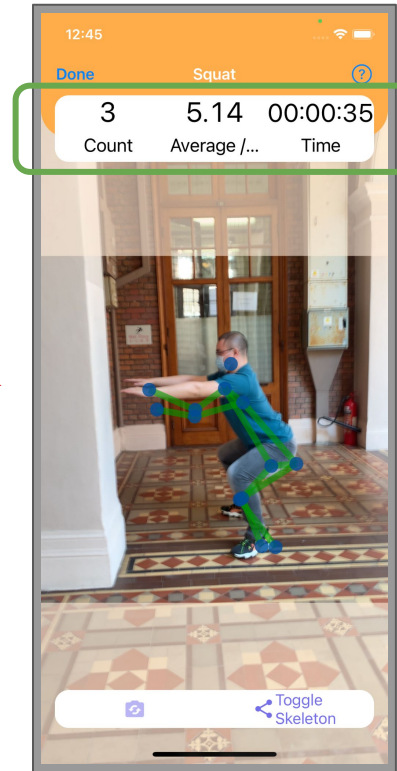
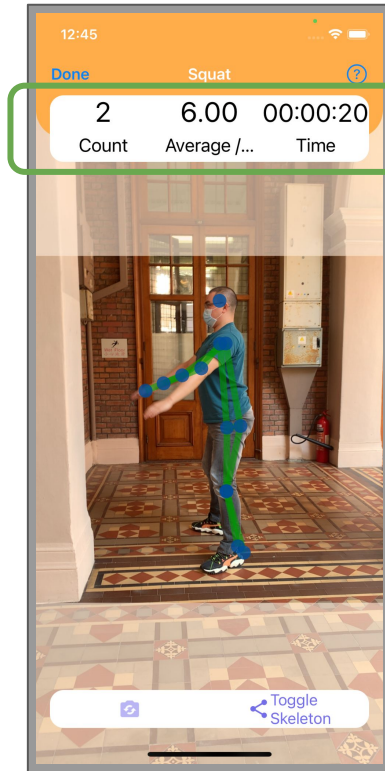




# Sport Section Screen



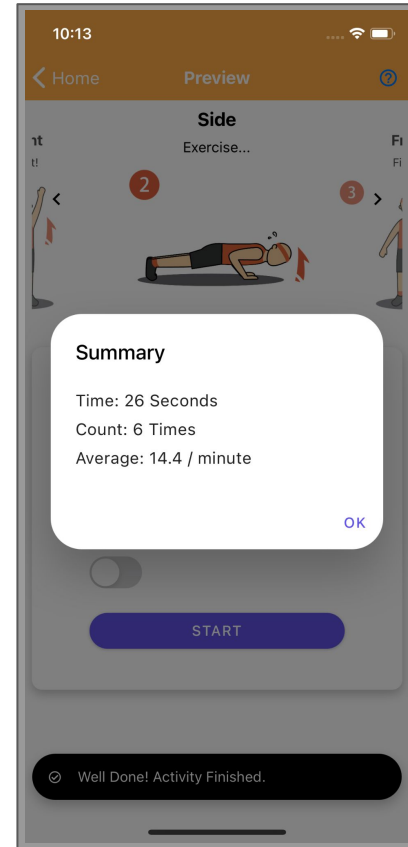
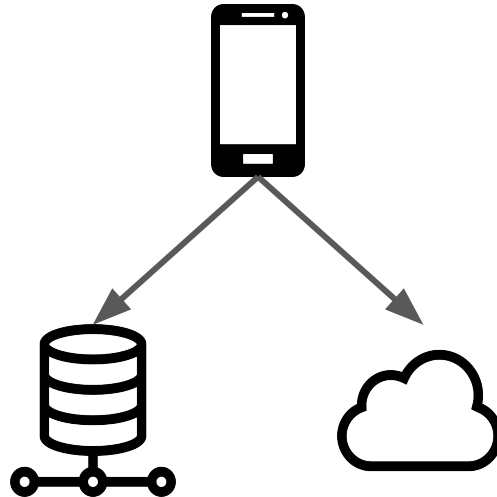
During exercise section, Sport AI will update the data record and notify the user with sound.



# Conclusion Dialog

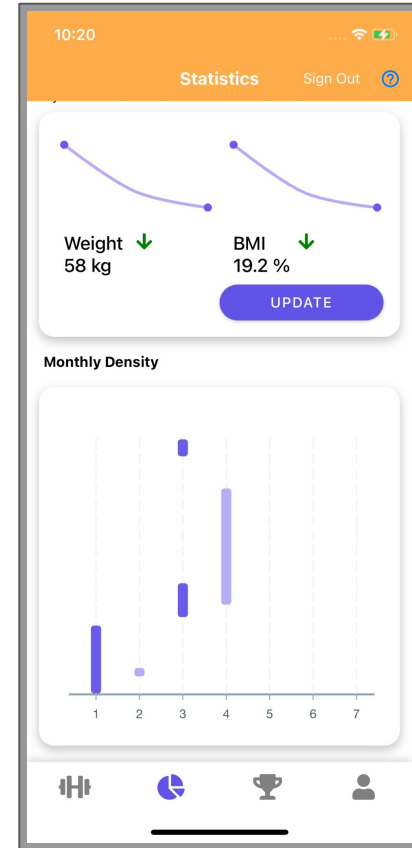
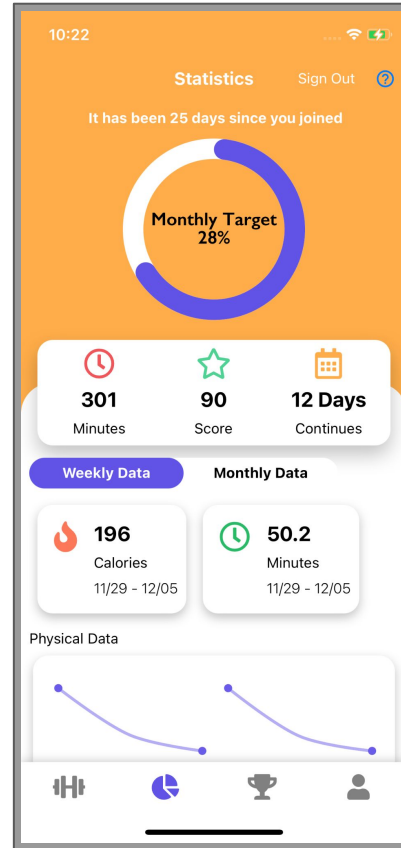
After an exercise, the record is stored to the device and also uploaded to the cloud server.

If there is no internet connection, the record will be uploaded the next time when connected to the internet.



# Statistics Screen

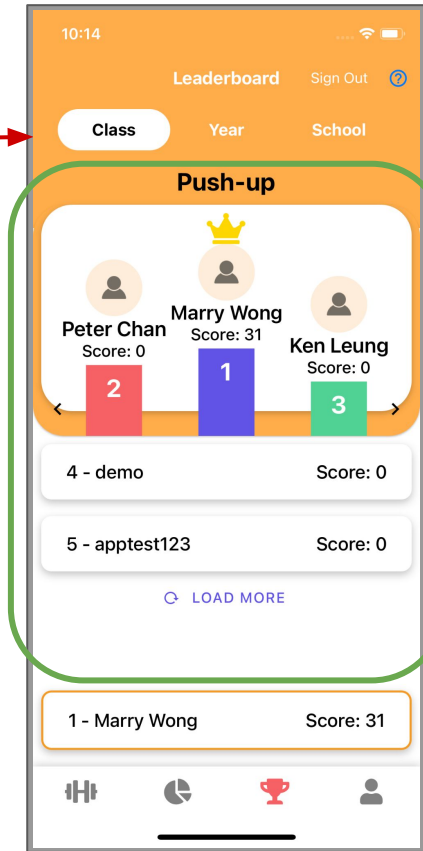
- Sports Data (Total / Monthly / Weekly)
  - Minutes
  - Score
  - Calories
- Physical Data
  - Track Changes through the app
  - Manually Update some values
- Monthly Activity Density
  - Track Exercise Period and Duration



# Leaderboard Screen

Pick a group to compete in

Swipe to check ranking in each sport for the selected group



Personal Ranking and Score



# Personal Information And Setting Screen

Personal Profile



Quick Progress Summary

- Check Progress



Support (Main Functions)

- Language and Theme
- How to Use
- Clear Data or Reset Settings

